

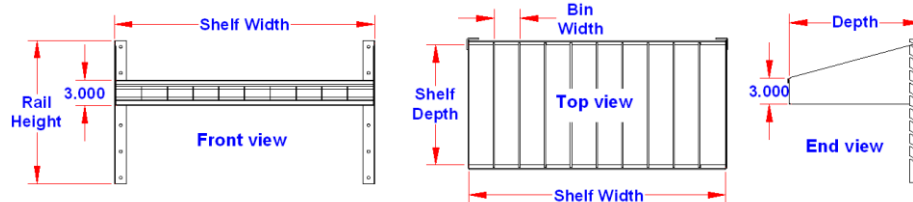
SU Series = Steel Shelf with Dividers.

SU1 series shelves are heavy duty and mounted inside box to store and organize your tools or parts. Shelves are adjustable up and down and the divider are removable. Shelves can be ordered in any size to fit any box. All AMERICAN TRUCKBOXES shelf kits are designed and built to keep your tools organized.

Description

- 16 & 18 gauge steel construction and powder coated finish

No.	Part Number	Application	Bolt Size	Weight Specs	Load Rating
1.	SU	Rack Bolt-In	5/16"	N/A	Varies



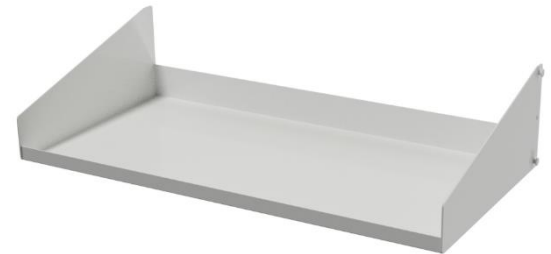
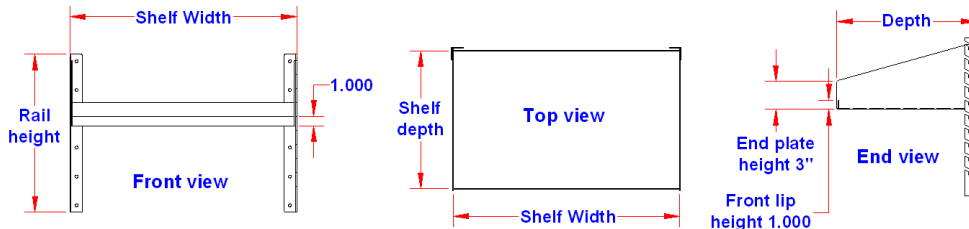
SF Series = Steel Shelf

SF2 series shelves are heavy duty and mounted inside box to store and organize your tools or parts. Shelves can be ordered in any size to fit any box. All AMERICAN TRUCKBOXES shelf kits are designed and built to keep your tools organized.

Description

- 14 gauge steel powder coated

No.	Part Number	Application	Bolt Size	Weight Per Set	Load Rating
1.	SF	Rack Bolt-In	5/16"	N/A	Varies



Wrench Hanger

Tool Organizers.

TO series tool organizers are heavy duty and are inserted inside tool box to store and organize your tools. Tool organizers are removable. Tool organizers can be ordered in different size to fit most boxes. All AMERICAN TRUCKBOXES tool organizers are designed and built to keep your tools organized.

Description

- 18 gauge steel construction and powder coated finish
- Optional rubber floor pads (use MTOP-1)

No.	Part Number	Application	Wrench Set	Drawer - Shelf	Height (in.)	Depth (in.)	Width (in.)
1.	S-WO51-2114-10R	Wrench Hanger	3/8 - 1	-	1-3/4	1-1/16	16-1/2
2.	S-WO51-2118-14R	Wrench Hanger	3/8 - 1-1/4	-	1-3/4	1-1/16	18-1/2
3.	S-DO41-	Screwdriver Holder	3/16" - 3/4"	-	3	4	12
4.	S-SO51-	Socket Holder Set	1/4, 3/8 & 1/2	-	-	-	-
5.	MTOP-1	Rubber Bumper Pads	6-Pads	-	-	-	-
6.	S-TO31-141620-R	Fixed Tool Organizer	3/8 - 15/16	N/A	14	16	20
7.	S-TO31-141626-R	Fixed Tool Organizer	3/8 - 15/16	N/A	14	16	26
8.	S-TO31-162120-R	Fixed Tool Organizer	3/8 - 1-1/6	N/A	16	21	20
9.	S-TO32-101420-R1	Drawer Tool Organizer	1/4 - 1-1/4	1-1	9.5	14	20
10.	S-TO32-141620-R2	Drawer Tool Organizer	1/4 - 1-1/4	2-1	14	16	20
11.	S-TO32-141626-R2	Drawer Tool Organizer	1/4 - 1-1/4	2-1	14	16	26



STO31-141620-R

Fits:
Boxes
18" Height x
20" Depth



MTOP-1



STO32-101420-R1