

TS – Auxiliary Fuel Tanks - Steel or Aluminum

Tanks are heavy duty, and offer auxiliary supply for water, diesel, oil and/or biofuels. Tanks can be mounted on, truck, flatbed and trailer. **It is the user's responsibility to comply with local, state and federal requirements pertaining to safe transportation, loading and discharging of tank contents. These tanks are not intended to be used for gasoline or cannot be used to transfer gasoline to another vehicle. ATB Secure & Trusted Design.**

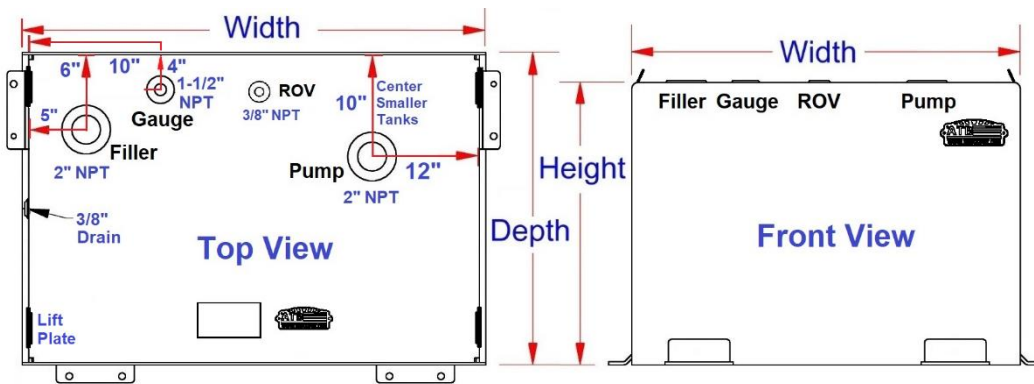
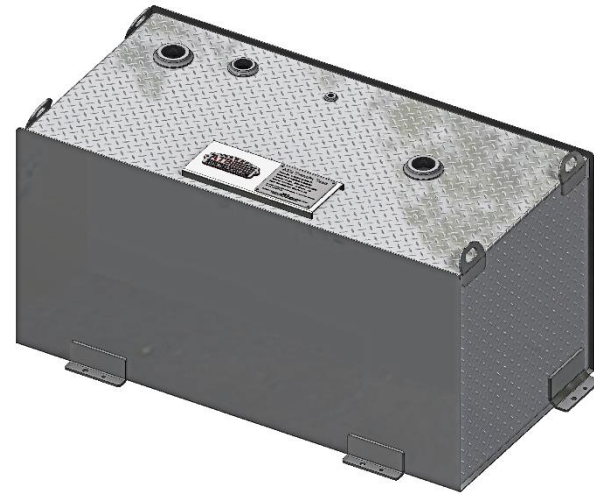
Description

- An engineered high strength steel or aluminum construction
- Fully seam welded on all seams and corners
- Built-in baffle(s) to reduce sloshing in larger tanks
- 2" female pipe tread couplings - inside reinforced
- 1-1/2" top fitting for sensor and 3/8" ROV/bottom drain
- Pressure tested for leaks
- Double Coated - Zinc epoxy primer & MR powder baked topcoat
- Mounting bracket tabs to secure tank
- Tanks to be used with diesel fuel only – Use only vented filler cap
- Mounting kit included - M3700 Series



TFC21-AU-A

Aluminum Tank



Steel Tank

Tanks should be mounted to ATB mounting installation guidelines. Failure to properly mount the tank will void warranty.

Note: *Tanks are available in multiple colors: Black (B) and White (W) Finish.

No.	Model Number	Material	Height (in.)	Depth (in.)	Width (in.)	Mounting Kit	Capacity (Gal.)	Weight (lb.)
1.	A-TS5-181426N-T2	.125 Smooth/.125 Tread	18	14	26	M3702	25	38
2.	A-TS5-182036N-T2	.125 Smooth/.125 Tread	18	20	36	M3702	50	60
3.	A-TS5-181654S-T2	.125 Smooth/.125 Tread	18	16	54	M3702	60	78
4.	A-TS5-182154D-T2	.125 Smooth/.125 Tread	18	21	54	M3705	80	98
5.	A-TS5-242445D-T2	.125 Smooth/.125 Tread	24	24	45	M3705	102	106
6.	A-TS5-261254D-T2	.125 Smooth/.125 Tread	26	12	54	M3705	65	84
7.	A-TS6-202454D-T2	.190 Smooth/.190 Tread	20	24	54	M3705	102	166
8.	A-TS6-242445D-T2	.190 Smooth/.190 Tread	24	24	45	M3705	102	154
9.	S-TS4-181426N-*2	14 Gauge Steel	18	14	26	M3702	25	68
10.	S-TS4-182036N-*2	14 Gauge Steel	18	20	36	M3702	50	106
11.	S-TS4-181654S-*2	14 Gauge Steel	18	16	54	M3702	60	140
12.	S-TS4-182154D-*2	14 Gauge Steel	18	21	54	M3705	80	174
13.	S-TS4-242445D-*2	14 Gauge Steel	24	24	45	M3705	102	184
14.	S-TS5-261254D-*2	14 Gauge Steel	26	12	54	M3705	65	140
15.	S-TS5-202454D-*2	12 Gauge Steel	20	24	54	M3705	102	274
16.	S-TS5-242445D-*2	12 Gauge Steel	24	24	45	M3705	102	254

Note: Tanks are available in different configuration and custom sizes; call the factory for different sizes and options.