

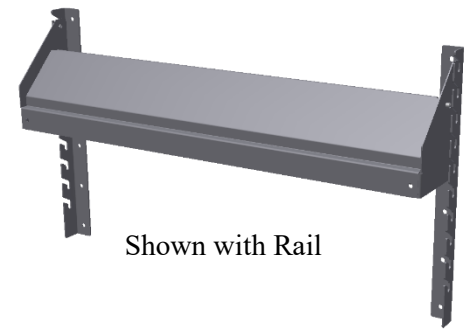
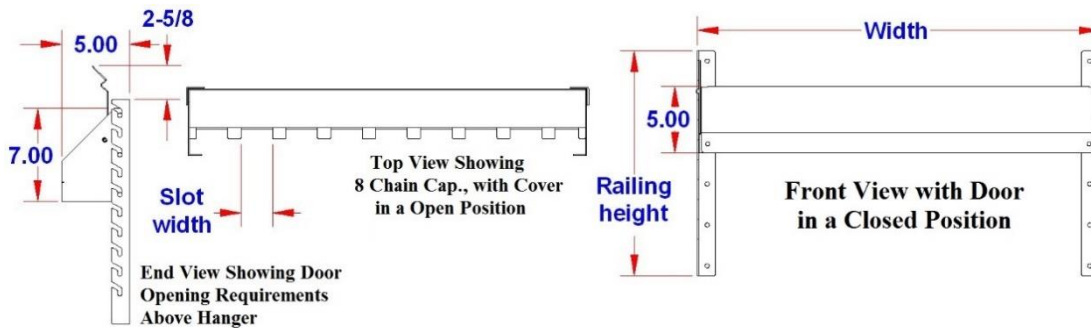
CH-SF2 Series = Steel Chain Hangers with Cover

CH-SF2 series chain hangers are heavy duty and mounted inside box to store and organize your chains and chain binders. Hangers come with adjustable vertical rail kit. Hangers can be ordered in any size to fit any box. All AMERICAN TRUCKBOXES chain hanger kits are designed and built to keep your chains organized.

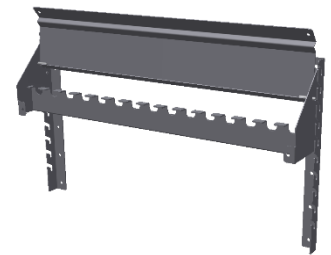
Description

- 12 & 14 gauge steel construction & powder finish

No.	Part Number	Box Series	Bolt Size	Weight Lbs.	Load Rating
1.	CH-SF2-3319	RB-Rack Outside	5/16	9	N/A
2.	CH-SF2-3325	RB-Rack Middle	5/16	11	N/A



Shown with Rail



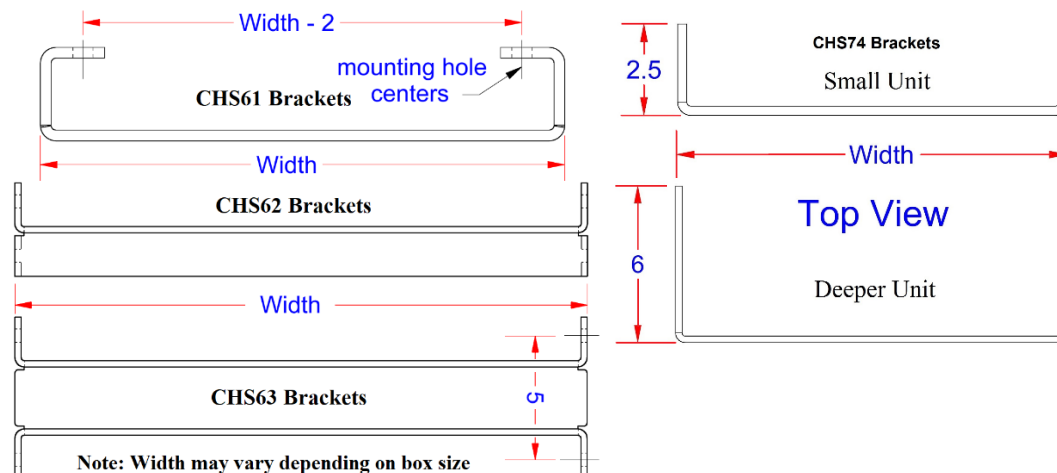
CHS Series = Steel Chain Hangers Strap

CHS series chain hangers strap are heavy duty and mounted inside box to store and organize your chains and chain binders. Hangers are different depths, height adjustable and mounted on vertical rail kit. Hangers can be ordered in any size to fit any box. All AMERICAN TRUCKBOXES chain hanger kits are designed and built to keep your chains organized.

Description

- 3/16" and 1/4" steel with Zinc epoxy primer with MR powder baked topcoat finish

No.	Part Number	Description	Mat.	Bolt Size	Length	Weight Lbs.	Load Rating
1.	CHS61-2312-W	Bolt-On Single Hanger	3/16	7/16"	Standard	2.6	250
2.	CHS62-2224-W	Bolt-In Single Hanger	3/16	7/16"	SB/SF -1/2"	8.6	300
3.	CHS72-2236-W	Bolt-In Single Hanger	1/4	7/16"	SB/SF -1/2"	14.8	300
4.	CHS63-2324-W	Bolt-In Double Hanger	3/16	7/16"	SB/SF -1/2" TC -1.25	12.0	300
5.	CHS73-2336-W	Bolt-In Double Hanger	1/4	7/16"	SB/SF -1/2"	22.0	300
6.	CHS74-3319-W	RB-Rack Outside	1/4	5/16"	RB=19	5.1	250
7.	CHS74-3325-W	RB-Rack-Middle	1/4	5/16"	RB=25	6.4	250
8.	CHS74-6619-W	RB-Rack Outside	1/4	5/16"	RB=19	6.6	250
9.	CHS74-6625-W	RB-Rack-Middle	1/4	5/16"	RB=25	7.9	250



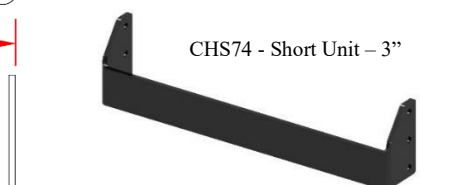
CHS61



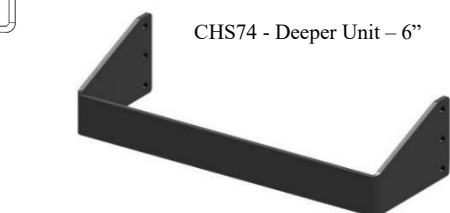
CHS62



CHS63



CHS74 - Short Unit - 3"



CHS74 - Deeper Unit - 6"

Note: CHS61 Bracket is limited to weight & width, double bracket if longer than 12" in width.