

**UU – UTV Utility Boxes – Aluminum – Double Side Open Doors**

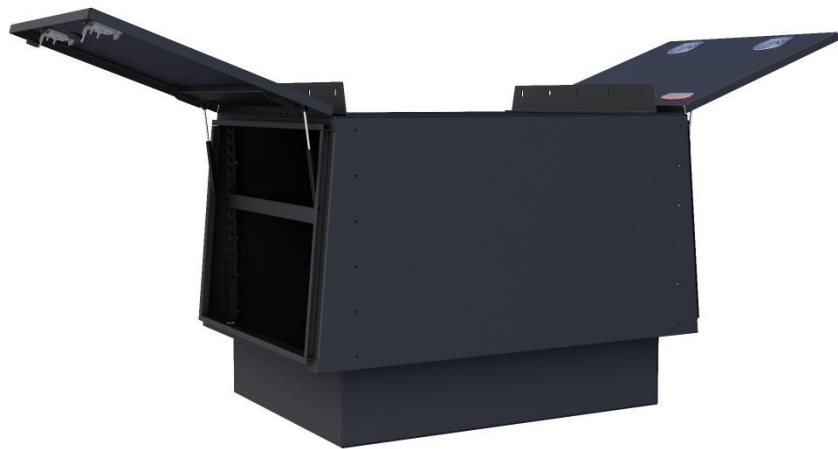
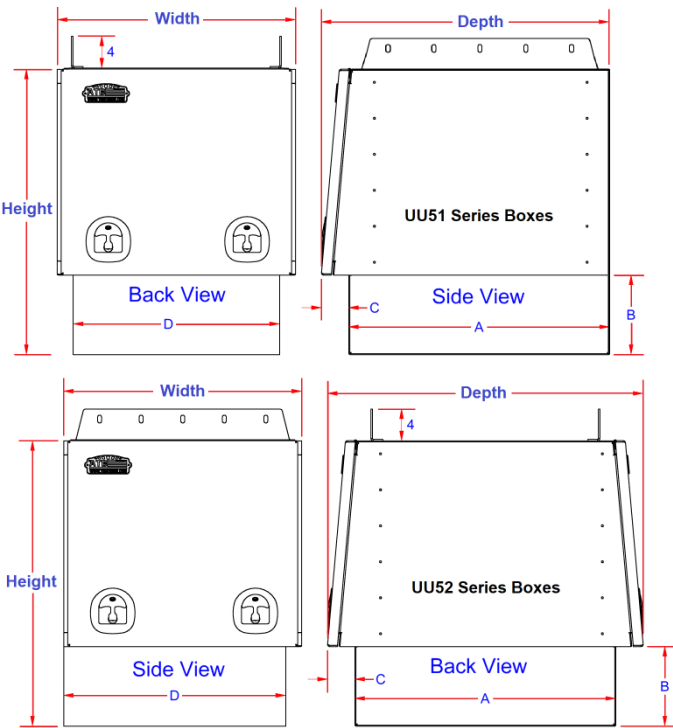
UTV Utility boxes are heavy duty and offer a great way to transfer your tools, equipment, cargo, game and/or fishing & hunting gear. Boxes can be mounted on the back of UTV or many other applications. **Boxes are available in different sizes, with or without shelf or rack and can be ordered custom size.** All AMERICAN TRUCKBOXES boxes are designed and built to keep your equipment safe and secure.

**Description**

- An engineered .090/.125 smooth /.100 TP aluminum construction
- Fully seam welded on all seams and corners
- Stainless steel continuous hinge on full length of door
- Unique design for perfect fit and looks
- Channel braced reinforced Door with gas springs
- Lockable automotive stainless-steel latch with smooth rotary action and adjustable lock striker for positive weather seal
- Fully concealed rain gutter and automotive type weather seal
- Adjustable: inside shelf
- Top racks with easy tie down holes
- Mounting kit not included



UU51 Series



UU52 Series

**Note:** UTV's listed are design on demand; boxes can be ordered for any UTV vehicle. Double check your measurements.

No.	Model Number	UTV	Height (in.)	Depth (in.)	Width (in.)	Dim. "A" (in.)	Dim. "B" (in.)	Dim. "D" (in.)	Door Opening Height (in.)	Door Opening Width (in.)	Weight (lbs.)
1.	A-UU51R-403960ST-T1BX	Polaris 1000 CAM-DEF	40	39	60	36	12-1/2	48	22	55	169
2.	A-UU51R-404260ST-T1BX	Kubota 1100	40	42	60	39	11-1/2	56	23	55	182
3.	A-UU51R-404660ST-T1BX	JD 835R	40	46	60	44/T4	13-1/2	48	21	55	192
4.	A-UU52R-406039DT-T1BX	Polaris 1000 CAM-DEF	40	60	39	48	12-1/2	36	22	34	180
5.	A-UU52R-406041DT-T1BX	Kubota 1100	40	60	41	56	11-1/2	39	23	36	192
6.	A-UU52R-406046DT-T1BX	JD 835R	40	60	46	48	13-1/2	44/T4	21	41	202