

TY Series = Steel & Aluminum Trays for Cross & Side Boxes.

Trays are Professional, HD and are installed inside cross, side or chest boxes. Trays offer a great way to store tools, parts or personal belongings. Trays come with adjustable dividers and partitions to organize your tools. All AMERICAN TRUCKBOXES tray are designed and built to keep your tools organized.

Description

• 16 gauge steel powder coated & .090 Aluminum construction

No.	Part Number	Height	Depth	Width	Weight	Load-R
Fits Steel & Aluminum Cross Boxes: LG-HG-HC-MC						
1.	A-TY41-31725-20	3	17	25	10	75
2.	A-TY41-32125-24	3	21	25	12	75
3.	A-TY41-32525-28	3	25	25	14	75



TY41 Tray

Cross Box Tray

Fits Steel & Aluminum Side Boxes: HS & LS

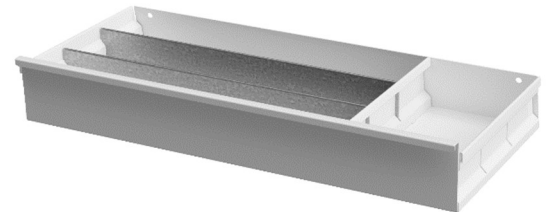
4.	S-TY32-3725-13	3	7	25	8	75
5.	S-TY32-31125-17	3	11	25	10	75

Fits Top Chest Boxes: ATC41, ATC51, STC41 & STC51

6.	S-TY35-3825-18	3	Varies	25	12	100
----	----------------	---	--------	----	----	-----

Fits Top Chest (Offset) Boxes: TC52 & TC42

7.	S-TY36-31225-18	3	Varies	25	9	100
----	-----------------	---	--------	----	---	-----



Side Box Tray

TY32 Tray



TY35 Tray



TY36 Tray

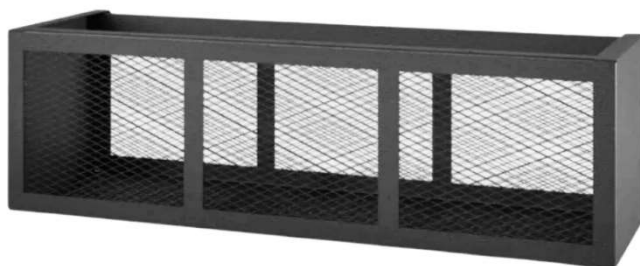
BV Series = Steel Baskets for Top Mount Applications.

Baskets are professional, heavy duty and are installed on a top flat surface. Baskets offer a great way to store tools, parts or personal belongings. All AMERICAN TRUCKBOXES baskets are designed and built to keep your tools organized.

Description

• 10 gauge steel powder coated construction

No.	Part Number	Height	Depth	Width	Weight	Load-R
Steel Baskets						
1.	S-BV61-181836-BX	18	18	36	82	N/A
2.	S-BV61-181848-BX	18	18	48	104	N/A
3.	S-BV61-181860-BX	18	18	60	126	N/A



S-BV61-181860 Tray