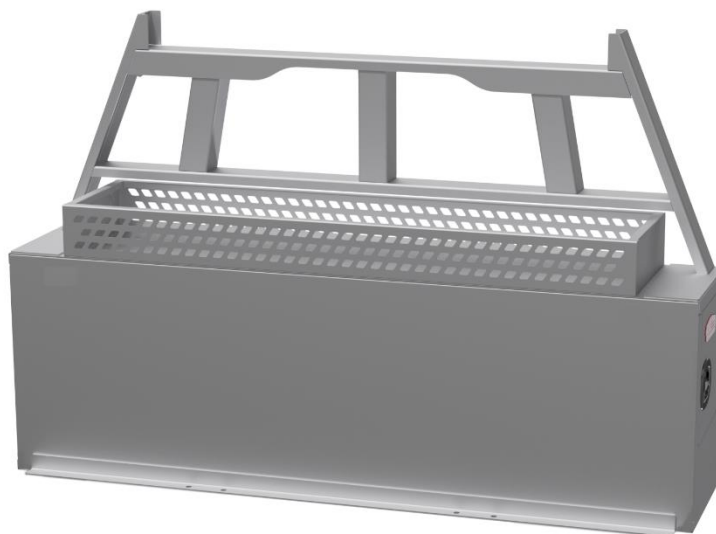


HP – Hotshot Cross-Pack Boxes – Aluminum – Both End Doors

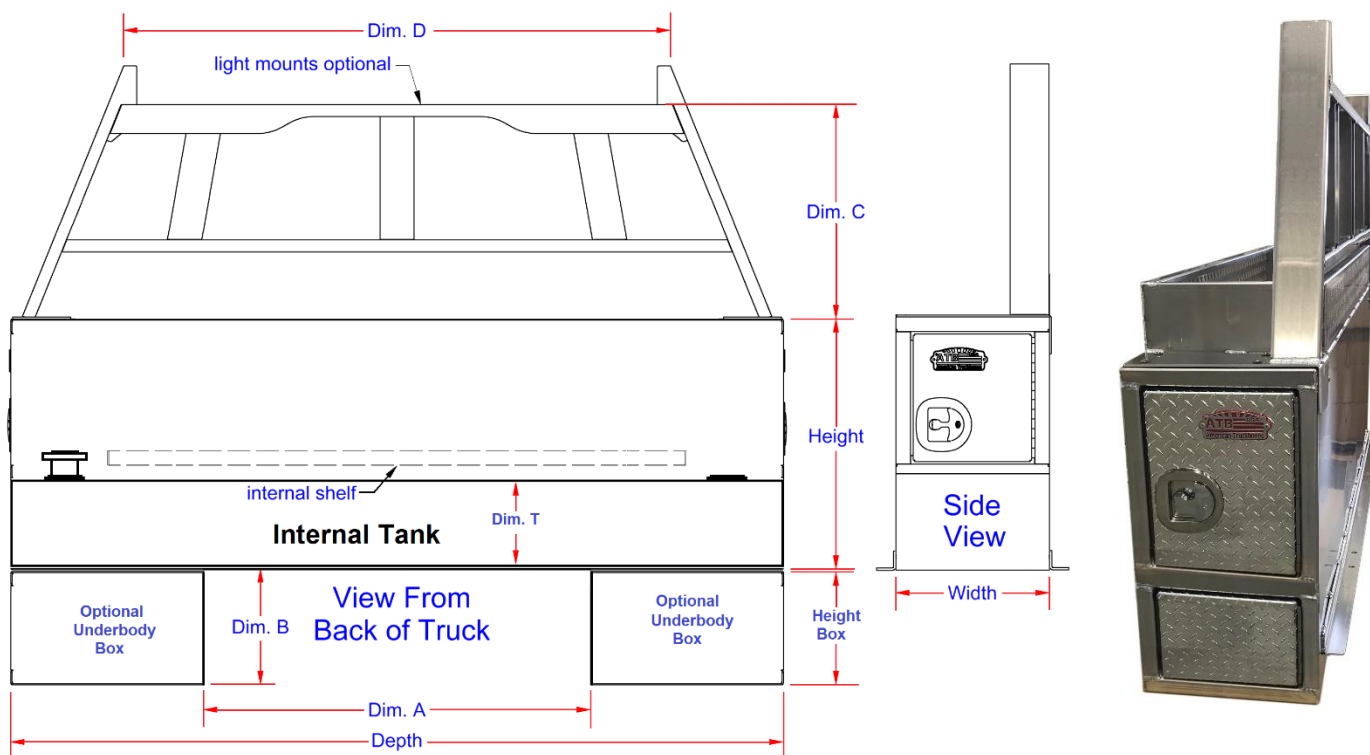
Hotshot Cross-Pack service boxes are heavy duty, high capacity and offer easy access to your equipment. Boxes are mounted behind truck cab on truck frame. These boxes are perfect for storing your equipment, tools and personal gear. Cross-pack boxes are available in different sizes and can be ordered custom size. All AMERICAN TRUCKBOXES boxes are designed and built to keep your equipment safe and secure.

Description

- An engineered aluminum construction
- Fully seam welded on all seams and corners
- Stainless steel continuous hinge on full length of door
- Channel braced reinforced door with gas springs
- Lockable SS Dolphin Tail HD adjustable T-handle latch
- Built-in frame mounting rails for easy installation
- Rain gutter and automotive type weather seal
- Internal stationary shelf & tank with filler cap
- Optional powder coated baked-on finish
- Headache rack & optional top open tray
- Optional drawers in box available
- Optional Service boxes (16"h x16"d x24"w) - (16"h x19"d x36"w)
- Mounting kit not included: Kit available M3450C



Shown with optional Tray



*Add width of boxes to part number

| No. | Model Number | Material | Height (in.) | Depth (in.) | Width (in.) | Dim. A (in.) | Dim. B (in.) | Dim. C (in.) | Dim. D (in.) | Side Boxes (in.) | Tank Capacity (Gal.) | Weight (lb.) |
|-----|--------------------|----------|--------------|-------------|-------------|--------------|--------------|--------------|--------------|------------------|----------------------|--------------|
| 1. | A-HP51-268016S-T | 10g Alum | 26 | 80 | 16 | 48 | 16 | 23 | 64 | No | 14"H/64 | 312 |
| 1.A | A-HP52-268016S-TK* | 10g Alum | 26 | 80 | 16 | 48 | 16 | 23 | 64 | Yes-20 | 14"H/64 | 337 |
| 2. | A-HP52-269016S-T | 10g Alum | 26 | 90 | 16 | 52 | 16 | 23 | 74 | No | 14"H/72 | 352 |
| 2.A | A-HP52-269016S-TK* | 10g Alum | 26 | 90 | 16 | 52 | 16 | 23 | 74 | Yes-36 | 14"H/72 | 390 |

Note: *Boxes are available in: Black (BX) and White (WX) Finish – add after part number.