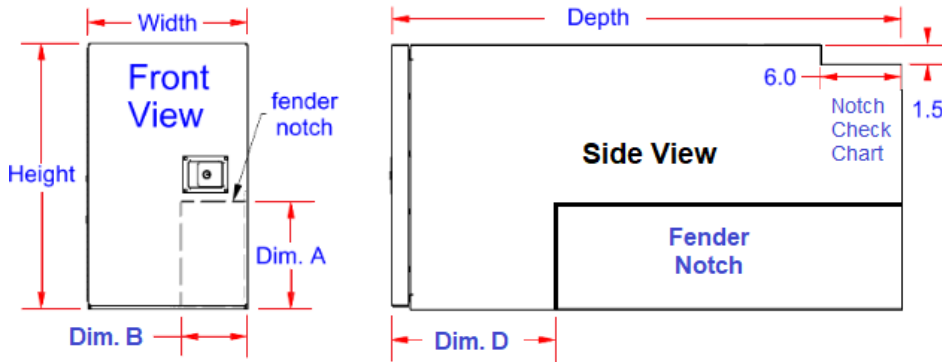
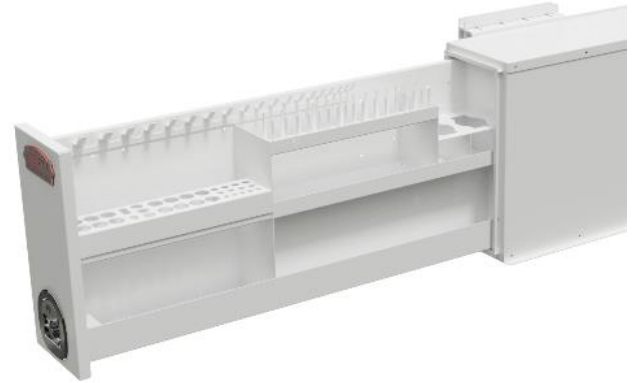


## DF-O – Drawer Fender Boxes - Steel or Aluminum

Drawer fender boxes are ultimate storage solution for your pickup truck under the tarp applications; heavy duty, high capacity and offer easy access to your equipment and tools. Boxes can be mounted in truck bed over the fenders. These boxes are perfect for storing your equipment, tools and personal gear. Drawer fender boxes are available in custom size. All AMERICAN TRUCKBOXES boxes are designed and built to keep your equipment safe and secure.

### Description

- An engineered aluminum & steel construction
- Optional - Powder coat finish steel boxes
- Stainless Steel hinge on full length of door/lid
- Lockable stainless-steel pull and/or DT-T-handle latch
- Automotive weather seal
- Fit under truck tonneau or box cover
- Pro-Tool organized on pull out drawer
- Back compartment on longer boxes
- Heavy duty smooth action slides
- Mounting kit included - M3200D



Note: \*Add L-Left (driver) or R-Right (passenger) Drawer configuration.

| No. | Model Number         | Material   | Height (in.) | Depth (in.) | Width (in.) | Dim. D (in.) | Drawer/Depth  | Back Compart | Back Notch | Fits Box  | Weight (lb.) |
|-----|----------------------|------------|--------------|-------------|-------------|--------------|---------------|--------------|------------|-----------|--------------|
| 1.  | A-DF41O-20189*-S1    | .90 Smooth | 20           | 18          | 9           | 18           | 1 Side-W/Org. | N/A          | No         | 6' - 8'   | 36           |
| 2.  | A-DF41O-20219*-S1    | .90 Smooth | 20           | 21          | 9           | 18           | 1 Side-W/Org. | N/A          | No         | 6.5' - 8' | 40           |
| 3.  | A-DF42O-20469*-S2    | .90 Smooth | 20           | 46          | 9           | 19           | 1 Side-W/Org. | N/A          | No         | 6' - 8'   | 76           |
| 4.  | A-DF42O-20549*-S2    | .90 Smooth | 20           | 54          | 9           | 19           | 1 Side-W/Org. | N/A          | No         | 6' - 8'   | 85           |
| 5.  | A-DF42O-20649*-S2    | .90 Smooth | 20           | 64          | 9           | 19           | 1 Side-W/Org. | N/A          | No         | 6' - 8'   | 93           |
| 6.  | A-DF42O-20549*N-S2   | .90 Smooth | 20           | 54          | 9           | 19           | 1 Side-W/Org. | N/A          | Yes        | 6' - 8'   | 85           |
| 7.  | A-DF42O-20649*N-S2   | .90 Smooth | 20           | 64          | 9           | 19           | 1 Side-W/Org. | N/A          | Yes        | 6' - 8'   | 95           |
| 8.  | A-DF42O-20749*CN-S2  | .90 Smooth | 20           | 74          | 9           | 19           | 1 Side-W/Org. | Top          | Yes        | 6.5' - 8' | 106          |
| 9.  | A-DF42O-207412*CN-S2 | .90 Smooth | 20           | 74          | 12          | 19           | 1 Side-W/Org. | Top          | Yes        | 6.5' - 8' | 124          |

Note: Boxes are available in: Black (BX) and White (WX) Finish – add after part number.