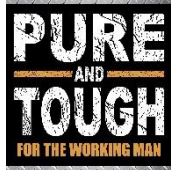


CS – Chest-Safe (Job Site) Chest Boxes - Aluminum & Steel - Single Top Open Lid

Chest-safe boxes are super heavy duty and offer easy access to your tools and equipment. Boxes can be mounted on truck box, flatbed or trailer. These boxes are perfect for storing your equipment, tools and personal gear. Chest safe boxes are available in different sizes and can be ordered custom size. All AMERICAN TRUCKBOXES boxes are designed and built to keep your equipment safe and secure.

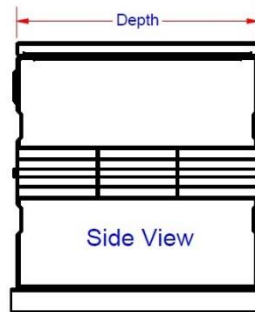
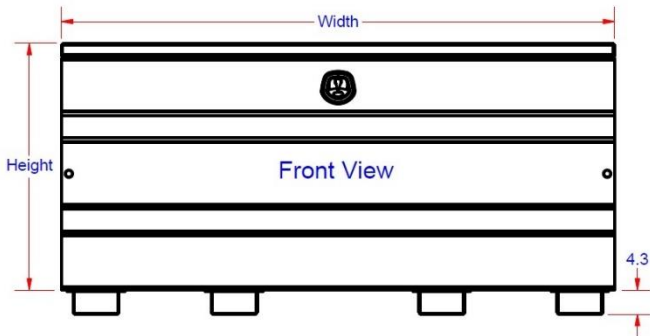


Description

- An engineered aluminum or steel construction
- Fully seam welded on all seams and corners
- Stainless steel continuous hinge on full length of lid
- Gas Springs to “pop” and keep lid open.
- Channel braced reinforced lid and sides
- Zinc epoxy primer with MR powder baked topcoat finish
- Lockable DT-T-handle plus padlock able
- Full length lid security latch lock bar
- Striker for positive weather seal and automotive type weather seal
- Caring handles and tie down full depth of box
- F=Forklift slots – Smaller boxes come standard with two slots



Shown with Forklift Slots



No.	Model Number	Material	Material Fork Slots-Qty.	Height (in.)	Depth (in.)	Width (in.)	Lid Opening Depth (in.)	Lid Opening Width (in.)	Weight (lb.)
1.	A-CS54F-243048-T	.125 Smooth/.125 TP	.125 AL – 3	24	30	48	21-3/4	42.00	108
2.	A-CS54F-243648-T	.125 Smooth/.125 TP	.125 AL – 3	24	36	48	27-3/4	42.00	118
3.	A-CS54F-303060-T	.125 Smooth/.125 TP	.125 AL – 3	30	30	60	21-3/4	54.00	140
4.	A-CS54F-303072-T	.125 Smooth/.125 TP	.125 AL – 3	30	30	72	21-3/4	66.00	160
5.	A-CS54F-342848-T	.125 Smooth/.125 TP	.125 AL – 3	34	28	48	19-3/4	42.00	120
6.	A-CS54F-342860-T	.125 Smooth/.125 TP	.125 AL – 3	34	28	60	19-3/4	54.00	142
7.	A-CS54F-343072-T	.125 Smooth/.125 TP	.125 AL – 3	34	30	72	21-3/4	66.00	191
8.	A-CS54F-363672-T	.125 Smooth/.125 TP	.125 AL – 3	36	36	72	27-3/4	66.00	220
9.	A-CS54F-363696-T	.125 Smooth/.125 TP	.125 AL – 4	36	36	96	27-3/4	90.00	275
10.	S-CS44F-243048-*	14 Gauge Steel	12 G. Steel – 3	24	30	48	21-3/4	42.00	210
11.	S-CS44F-243648-*	14 Gauge Steel	12 G. Steel – 3	24	36	48	27-3/4	42.00	225
12.	S-CS44F-303060-*	14 Gauge Steel	12 G. Steel – 3	30	30	60	21-3/4	54.00	270
13.	S-CS44F-303072-*	14 Gauge Steel	12 G. Steel – 3	30	30	72	21-3/4	66.00	304
14.	S-CS44F-342848-*	14 Gauge Steel	12 G. Steel – 2	34	28	48	19-3/4	42.00	232
15.	S-CS44F-342860-*	14 Gauge Steel	12 G. Steel – 3	34	28	60	19-3/4	54.00	278
16.	S-CS44F-343072-*	14 Gauge Steel	12 G. Steel – 3	34	30	72	21-3/4	66.00	322
17.	S-CS44F-363672-*	14 Gauge Steel	12 G. Steel – 3	36	36	72	21-3/4	66.00	358
18.	S-CS44F-363696-*	14 Gauge Steel	12 G. Steel – 4	36	36	96	29-3/4	90.00	456

Note: *Boxes are available in: Black (XB) and White (XW) Finish – add after part number.